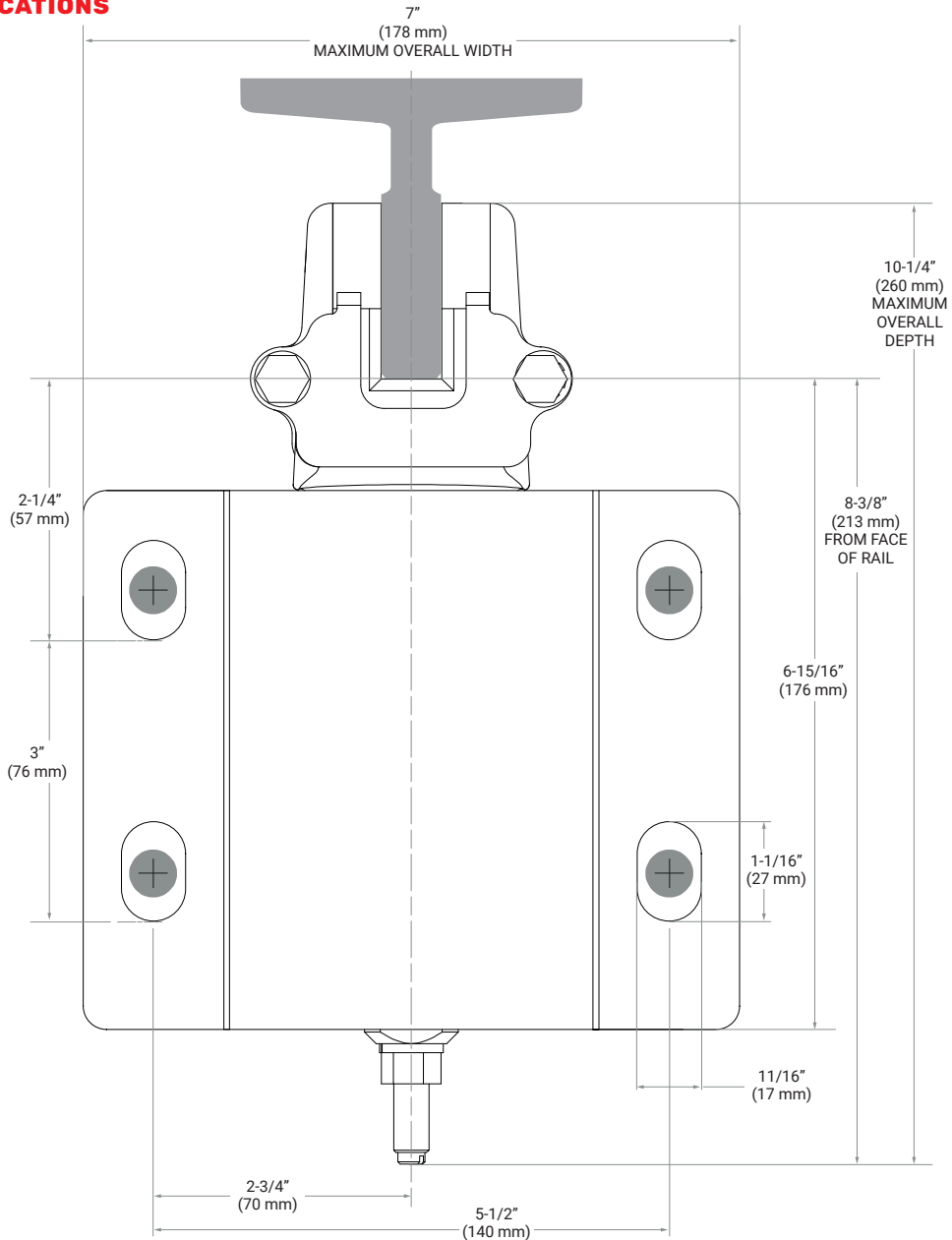




SWIVEL SLIDE GUIDES

MOUNTING SPECIFICATIONS

Part Number SA-15



Drawing not to scale.
Scan here for a full-scale
printable template.

Slide Guides with Dynamic Design Features

Designed for elevator cars and counterweights up to 10,000 lbs capacity in low-rise buildings.

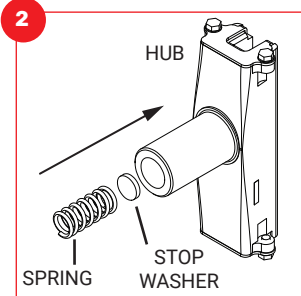
If the bolt pattern above does not line up exactly with your mounting pattern, **Flex-Mount™ Adjustable Adapter Plates** are the best time-saving, and money-saving solution. Contact us to find out more.

INSTALLATION INSTRUCTIONS

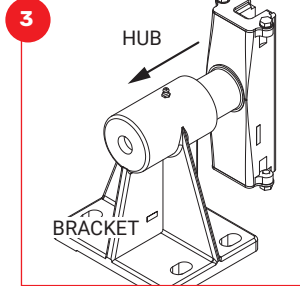
ELSCO's Swivel Slide Guides are designed with adjustment features that provide the best possible riding characteristics when guide shoes are specified.

1 ELSCO's Swivel Slide Guides include:

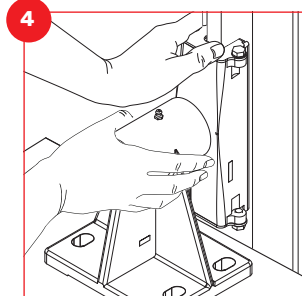
- › Hub and gib assembly
- › Mounting bracket
- › Spring
- › Solid stop washer and adjustable stop kit



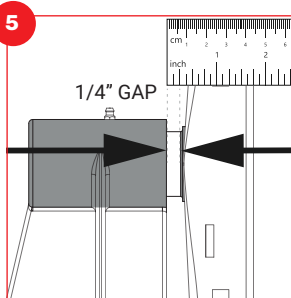
After verifying the proper location of the mounting holes (refer to mounting template), begin installation by inserting the solid stop washer, then spring, into the hub.



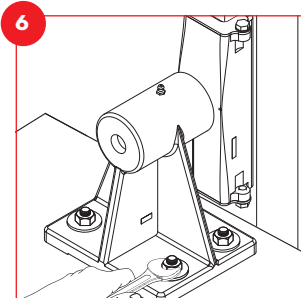
Slide the hub and gib assembly into the bracket.



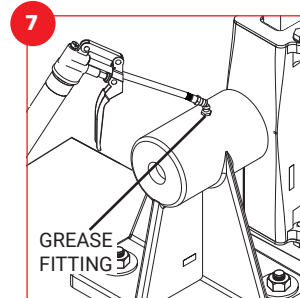
Position swivel sliding guide shoe onto the rail while lowering mounting bracket over the mounting holes or studs. Install mounting hardware (not included).



With gib seated firmly against the rail face, set 1/4" (6 mm) gap between the hub and bracket.



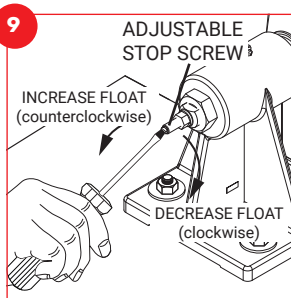
Securely tighten mounting bolts and/or nuts.



At this point, install the remaining guides on top of and/or beneath the elevator. Lubricate the fitting on each guide with general purpose grease until a small amount appears between the hub and bracket.



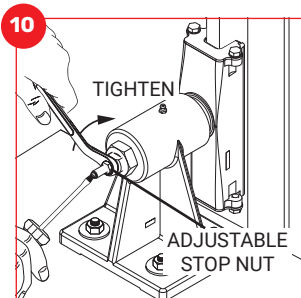
Insert adjustable stop kit and nut into bracket. The hub adjustment screw regulates the pressure of the gib against the face of the rail. The stop adjustment screw regulates the postwise float of the car.



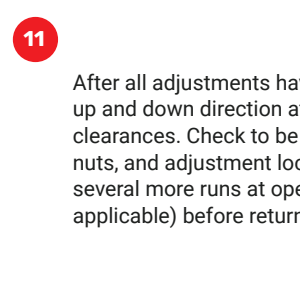
To limit postwise float, turn adjustable stop screw clockwise until it makes contact with solid stop washer (installed in step 2).

At this point, there will be zero postwise float. To increase float, turn adjustable stop screw counterclockwise.

Note: Each full turn equals 1/16" (2 mm).



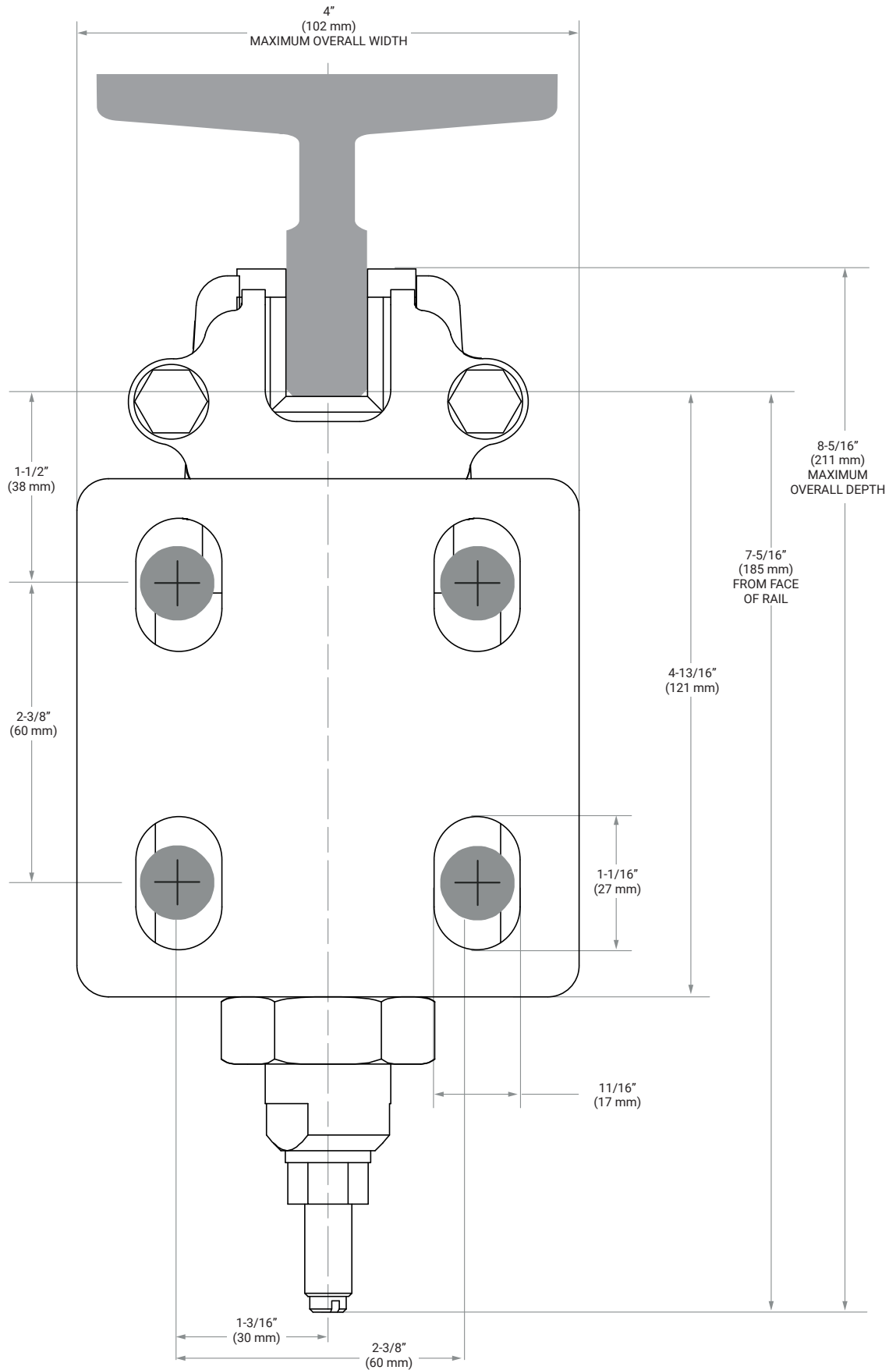
When the desired amount of postwise float is set, tighten the adjustable stop locknut securely while holding adjustable stop screw in place.



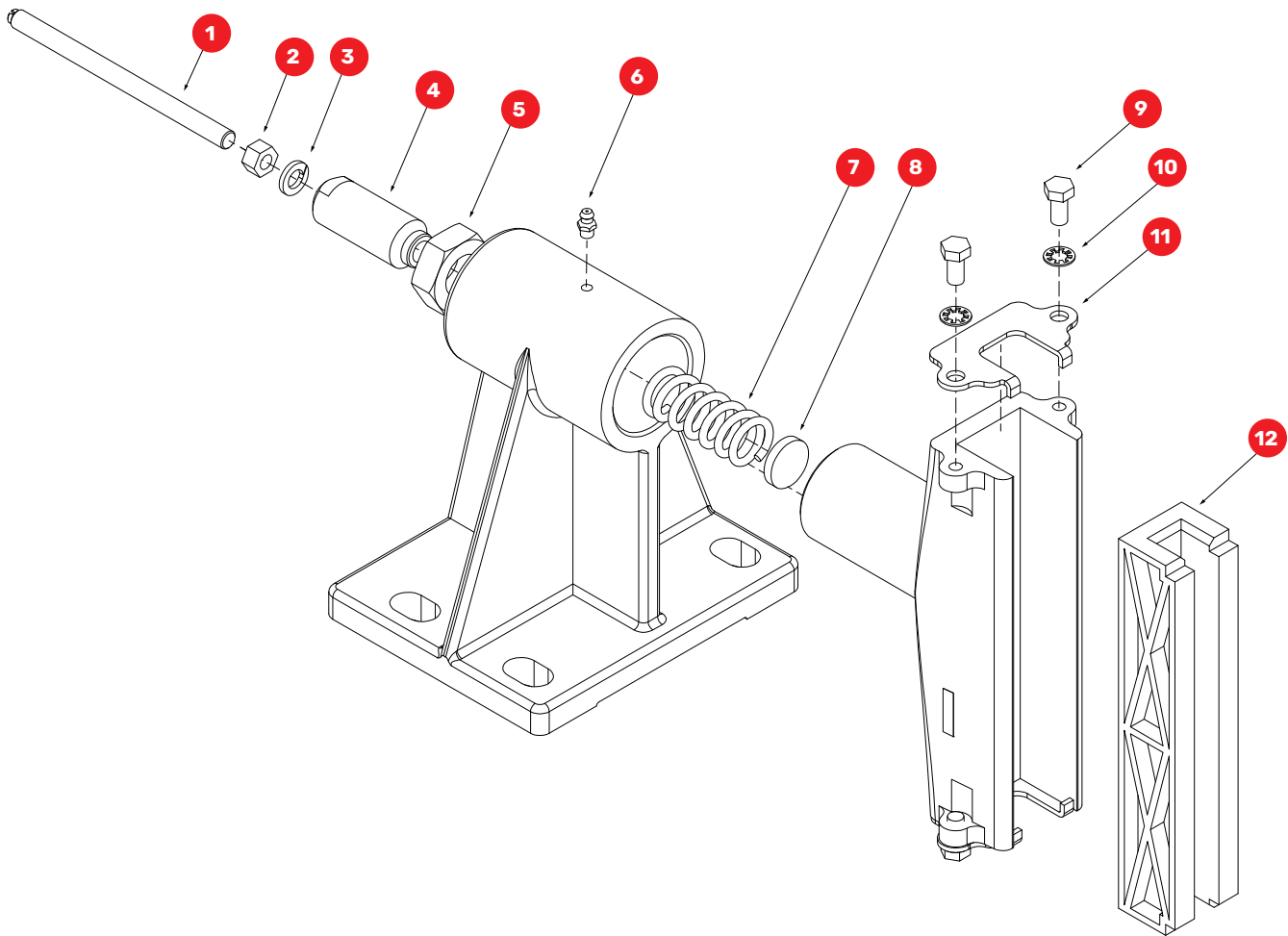
11 After all adjustments have been made, ride elevator in both the up and down direction at inspection speed to check hoistway clearances. Check to be sure that all mounting bolts and/or nuts, and adjustment locknuts are securely tightened. Make several more runs at operating speed, then recheck float (if applicable) before returning elevator to service.

MOUNTING SPECIFICATIONS

Part Number SD-8



SWIVEL SLIDE GUIDE SERVICE PARTS LIST



KEY	QTY	MODEL DESCRIPTION	SA-15 (EF04114)	SA-8 (EF04112)	SC-8 (EF04116)	SD-8 (EF04118)
			PART #			
1	1	Adjustable Stop Screw ◆	EC18413	EC18413	EC18413	EC18413
2	1	Hex Nut ◆	EA18329	EA18329	EA18329	EA18329
3	1	Lock Washer ◆	EA18330	EA18330	EA18330	EA18330
4	1	Hub Adjustment Screw ◆	EC18414	EC18414	EC18414	EC18414
5	1	Hex Nut ◆	EC19762	EC19762	EC19762	EC19762
6	1	Grease Fitting	EF04110	EF04110	EF04110	EF04110
7	1	Hub Spring ◆	EC18425	EC18425	EC18425	EC18425
8	1	Solid Stop Washer ◆	EC18419	EC18419	EC18419	EC18419
9	4	Hex Screw	EF04130	EF04130	EF04130	EF04130
10	4	Lock Washer	EF04131	EF04131	EF04131	EF04131
11	2	End Cap	EF04108	EF04108	EF04108	EF04119
12	1	Rail Gib	EF04127	EF04125	EF04125	EF04129

◆ Parts can be ordered together as a replacement kit under the part number #EC18412