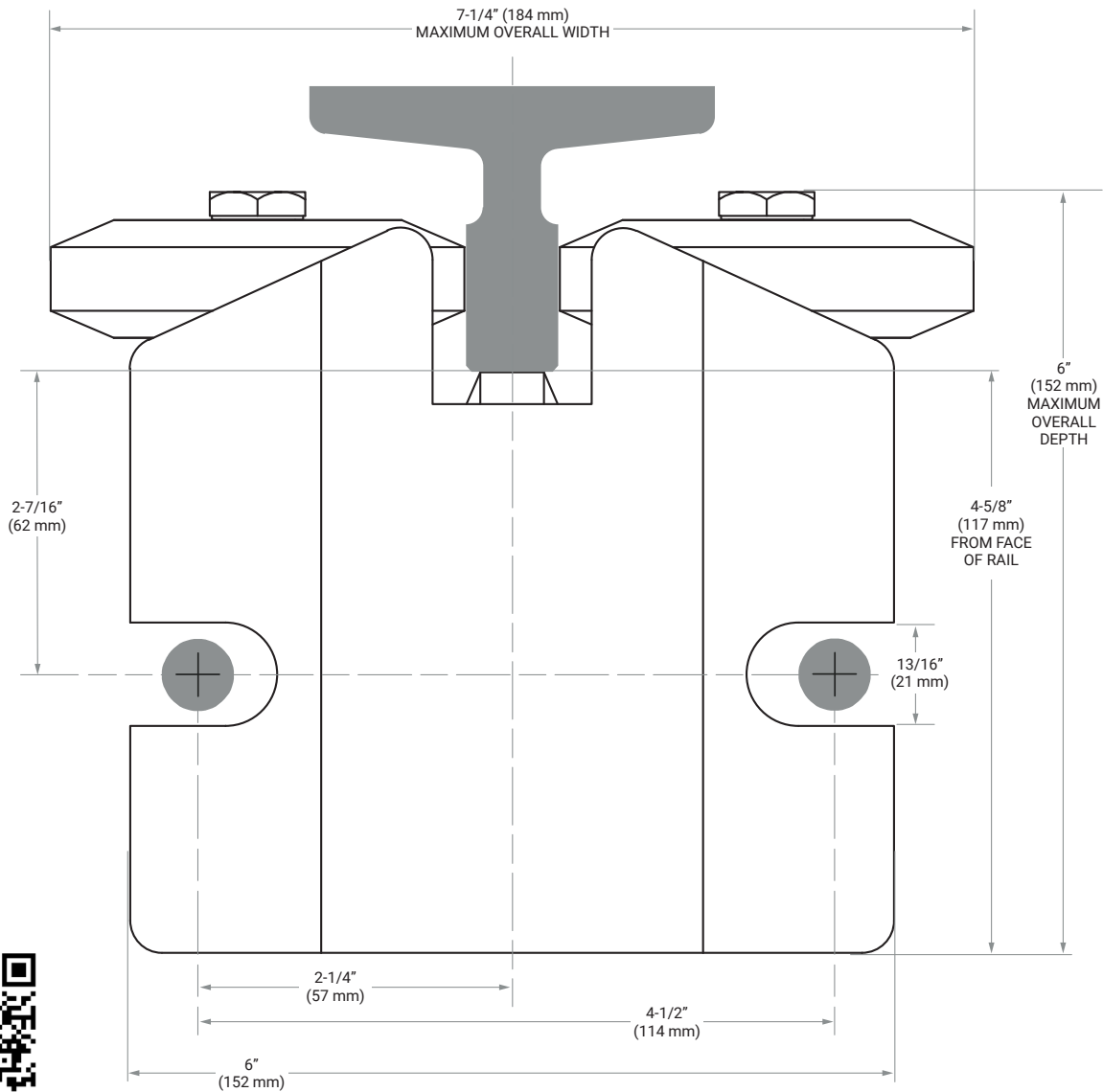




# MODEL E

## MOUNTING SPECIFICATIONS



Drawing not to scale.  
Scan here for a full-scale  
printable template.

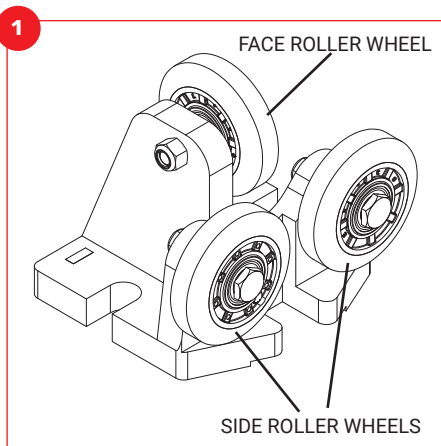
## Ride Quality, Simplicity, Economy

Designed for elevator cars up to 200 fpm and 3,000 lbs capacity & for counterweights up to 500 fpm or 4,000 lbs, in low-rise buildings.

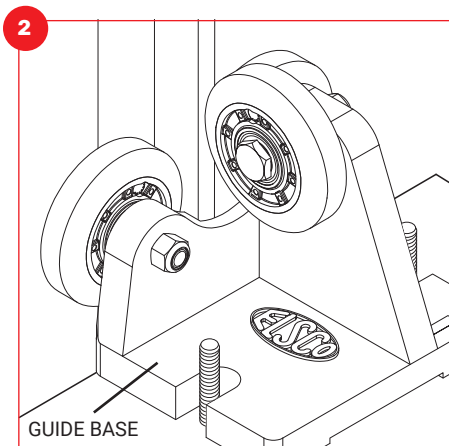
**INSTALLATION INSTRUCTIONS**

The installer can make a number of simple adjustments to the Model E guide to help minimize noise, bumps and vibration. For optimum performance and longer roller wheel life, we recommend that elevator rails be properly aligned and cleaned, and the car balanced before operation.

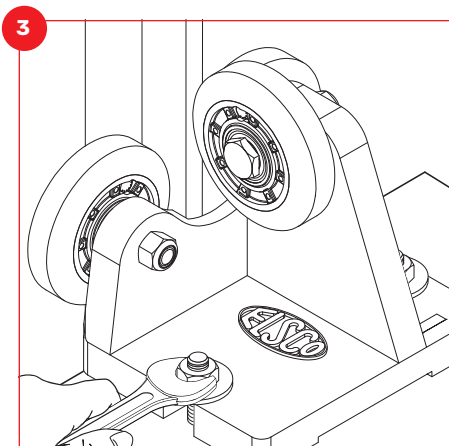
ELSCO roller guides are carefully assembled, inspected, and packed to arrive in perfect condition. When your shipment arrives, inspect it carefully for damage and, if appropriate, immediately file a claim with the carrier. For best results, read all instructions thoroughly before proceeding with the installation.



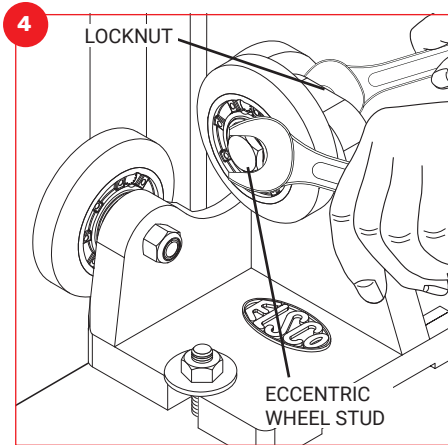
The Model E Guide comes completely assembled.



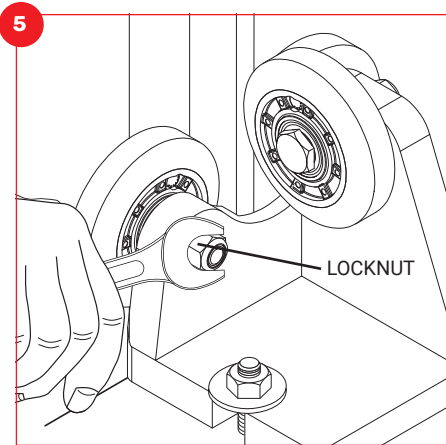
After verifying the proper location of the mounting holes (refer to mounting template), position guide base over mounting holes or studs with the face roller wheel seated against the rail.



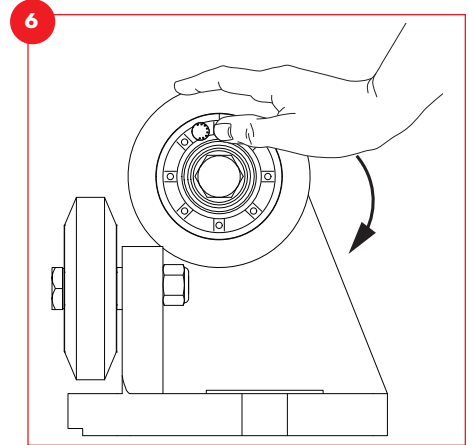
Install mounting hardware (not included). Securely tighten mounting bolts and/or nuts. At this point, install the remaining guides on top and/or beneath the elevator.



To adjust face roller wheel, loosen locknut and turn the eccentric wheel stud to increase or decrease wheel pressure against the rail. When the face roller wheel is properly positioned, tighten locknut.



Adjust side roller wheel pressures in the same manner as step 4, while keeping the face roller wheel tracking in the center of the rail. When the side roller wheels are properly positioned, tighten locknuts.



When properly adjusted, all roller wheels should be compressed 1/32" - 1/16" (1 - 2 mm), which represents approximately 25 - 50 lbs (12 - 25 kg) of wheel pressure. At this pressure, it will be possible to skid the roller wheels by hand with moderate effort.

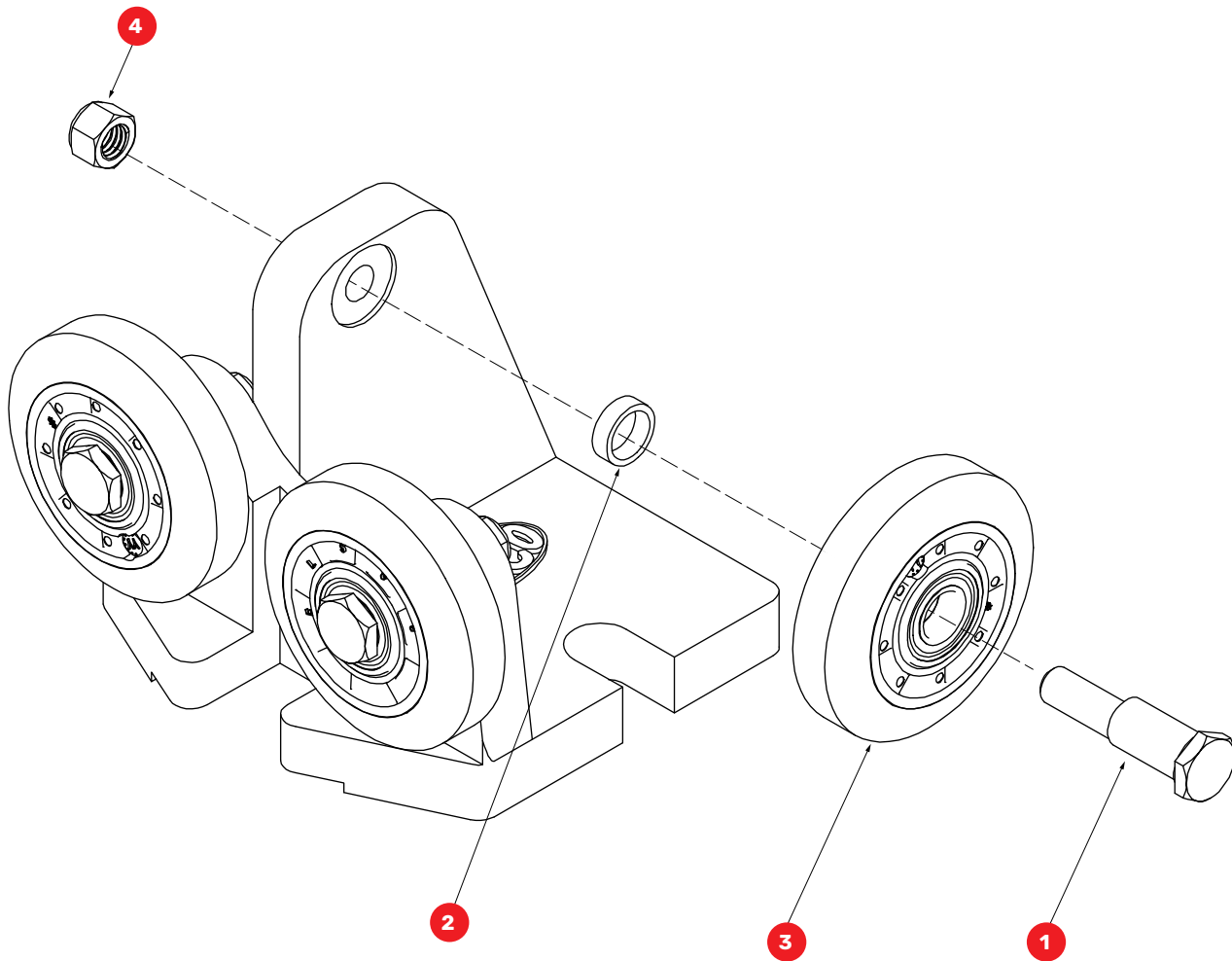
If installing guides equipped with polyurethane wheels, refer to step 7 for pertinent information.

**7** ELSCO's optional polyurethane roller wheels are made from a hard polymer material intended for use on lower speed elevators where the roller wheel pressures exceed those specified for neoprene composition wheels (25 - 50 lbs, or 12 - 25 kg). The red roller wheels have a durometer of 95 Shore A and the green roller wheels have a durometer of 80 Shore A.

While polyurethane roller wheels can operate at pressures up to 300 lbs (140 kg) per wheel, it is advisable to keep static pressure as low as possible to prevent flat spots from forming while the elevator is sitting. Flat spots can adversely affect ride quality by causing a rough and/or noisy ride. At higher pressures, it may not be possible to skid the roller wheels by hand.

**8** After all adjustments have been made, ride elevator in both the up and down direction at inspection speed to check hoistway clearances. Check to be sure that mounting bolts and/or nuts, and adjustment locknuts are securely tightened. Make several more runs at operating speed, then recheck tracking and roller wheel pressures before returning elevator to service.

**MODEL E ROLLER GUIDE SERVICE PARTS LIST**



KEY	QTY	PART #	DESCRIPTION
1	3	EE02205	Eccentric Wheel Stud
2	3	EC18435	Inner Spacer
3	3	<a href="#">See Roller Wheel Configuration Options</a>	
4	3	EE02206	Locknut

**ROLLER WHEEL CONFIGURATIONS**

**Typical Installations**

ASSEMBLY	QTY	PART #	DESCRIPTION
EE02200	3	EE02203	3-1/4" Black Neoprene Roller Wheel

**Heavy-Duty Installations**

ASSEMBLY	QTY	PART #	DESCRIPTION
EE02220	3	EE02219	3-1/4" Green Polyurethane Roller Wheel
EE02210	3	EE02209	3-1/4" Red Polyurethane Roller Wheel