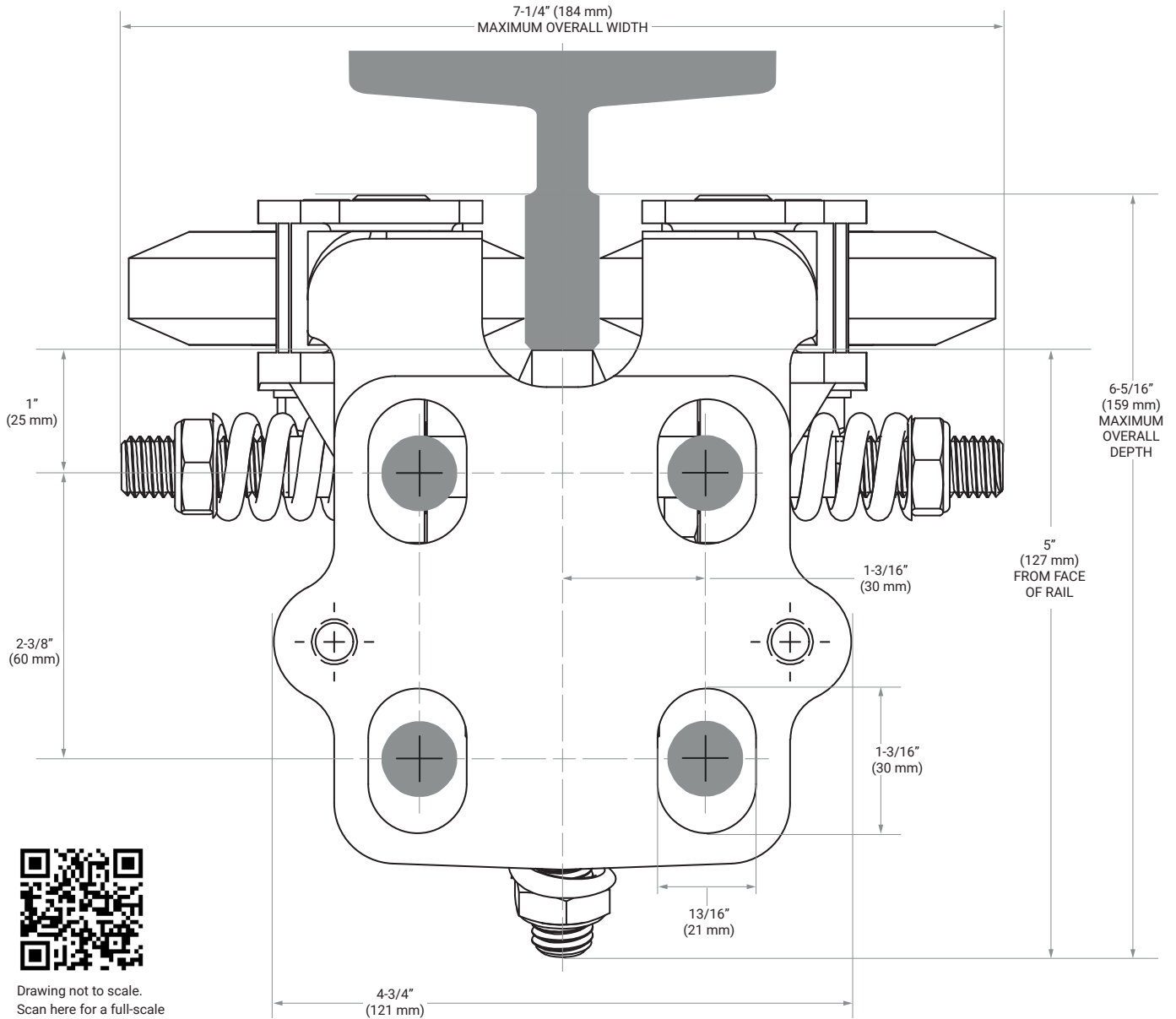




MODEL D

MOUNTING SPECIFICATIONS



Drawing not to scale.
Scan here for a full-scale
printable template.

The Industry's #1 choice of counterweight for elevator modernizations

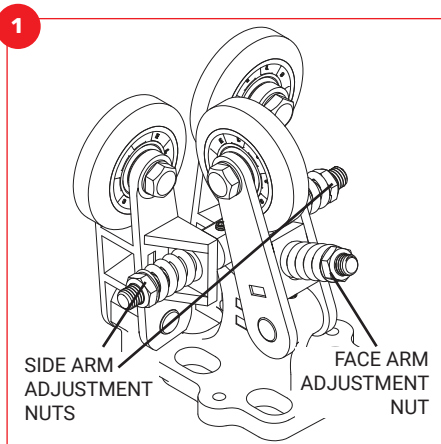
Designed for elevator counterweights up to 500 fpm and 4,000 lbs capacity in low- to mid-rise buildings

If the bolt pattern above does not line up exactly with your mounting pattern, **Flex-Mount™ Adjustable Adapter Plates** are the best time-saving and money-saving solution. Contact us to find out more.

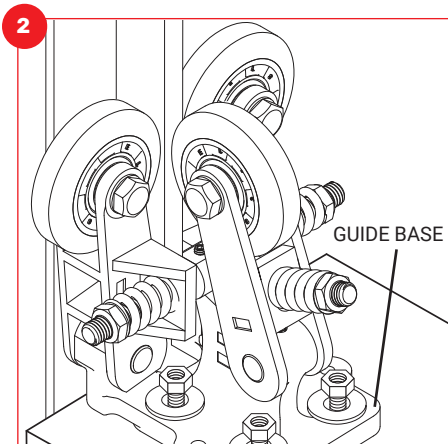
INSTALLATION INSTRUCTIONS

ELSCO Model D elevator roller guides are designed with adjustment features that provide superior riding characteristics. The installer can easily adjust ELSCO guides to compensate for adverse operating conditions and to minimize noise, bumps and vibration. For optimum performance and longer roller wheel life, we recommend that elevator rails be properly aligned and cleaned, and the car balanced before operation.

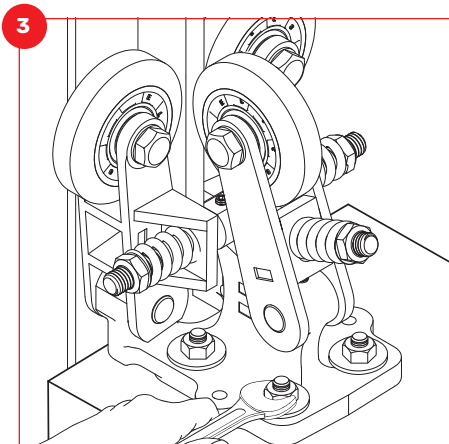
ELSCO roller guides are carefully assembled, inspected, and packed to arrive in perfect condition. When your shipment arrives, inspect it carefully for damage and, if appropriate, immediately file a claim with the carrier. For best results, read all instructions thoroughly before proceeding with the installation.



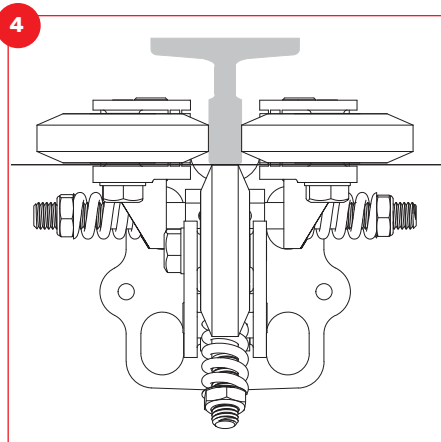
The Model D Guide comes completely assembled.



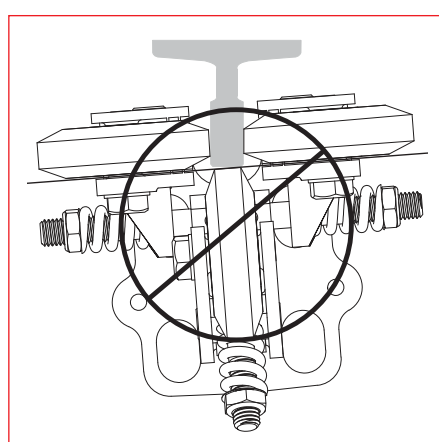
Position guide base over mounting holes or studs. Install mounting hardware (not included). Make certain that the center of the front mounting slots are located 1" (25 mm) back from the face of the rail (refer to mounting template).



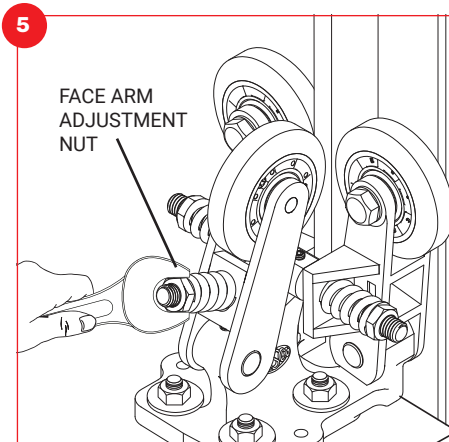
Securely tighten the mounting bolts and/or nuts. At this point, install the remaining roller guides on top and/or beneath the elevator.



Be sure that guides are aligned properly (as shown) before making any further adjustments.

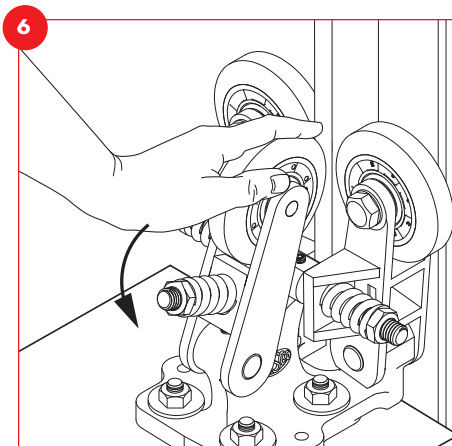


Improper alignment.

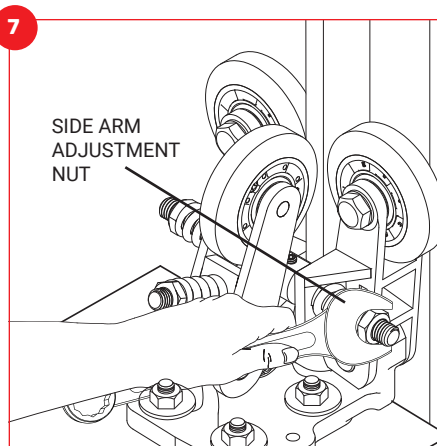


To adjust face roller wheel pressure, tighten face arm adjustment nut until the roller wheel is compressed 1/32" - 1/16" (1 - 2 mm). This represents 25 - 50 lbs (12 - 25 kg) of roller wheel pressure.

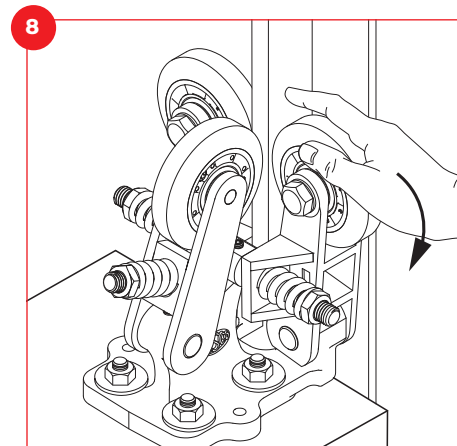
Note: If guides are equipped with polyurethane roller wheels, refer to step 9 for allowable wheel pressures.



When properly adjusted, it will be possible to skid the face roller wheel by hand with moderate effort. Be certain that the face roller wheel pressures are equal for each guide.



Adjust side roller wheel pressure. Turn the side arm adjustment nuts until side arm wheels are compressed 1/32" - 1/16" (1 - 2 mm), and the face arm roller wheels are tracking in the center of rail. This represents approximately 25 - 50 lbs (12 - 25 kg) of roller wheel pressure on each side arm roller wheel.



When properly adjusted, it will be possible to skid the arm roller wheels by hand with moderate effort.

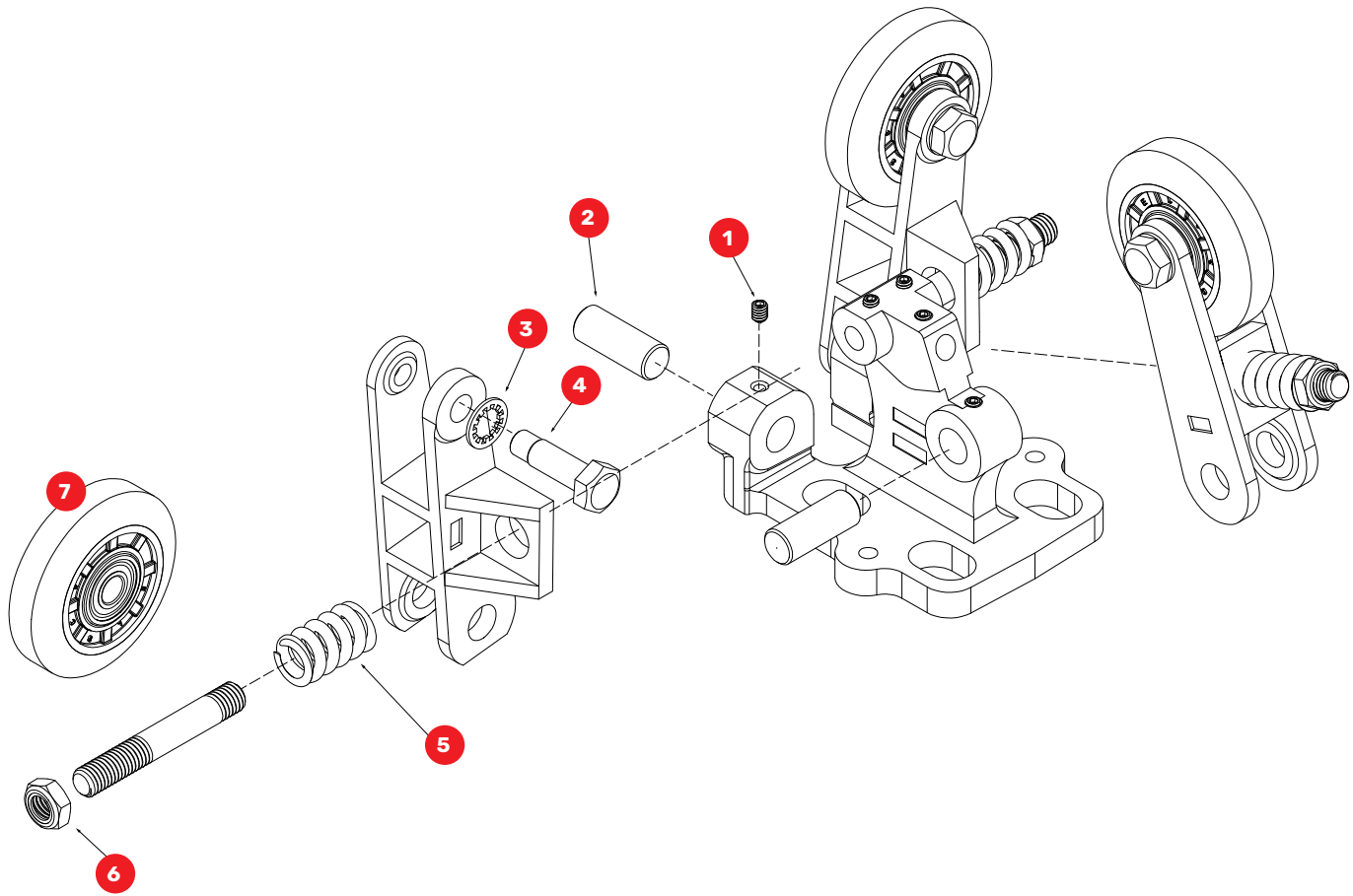
Note: If guides are equipped with polyurethane roller wheels, refer to step 9 for allowable wheel pressures.

- 9** ELSCO's optional polyurethane roller wheels are made from a hard polymer material intended for use on lower speed elevators where the roller wheel pressures exceed those specified for neoprene composition wheels (25-50 lbs, or 12-25 kg). The red roller wheels have a durometer of 95 Shore A and the green roller wheels have a durometer of 80 Shore A.

While polyurethane roller wheels can operate at higher pressures, it is advisable to keep static pressure as low as possible to prevent flat spots from forming while the elevator is sitting. Flat spots can adversely affect ride quality by causing a rough and/or noisy ride. At higher pressures, it may not be possible to skid the roller wheels by hand.

- 10** After all adjustments have been made, ride elevator in both the up and down direction at inspection speed to check hoistway clearances. Check to be sure that all mounting bolts and/or nuts are securely tightened. Make several more runs at operating speed, then recheck tracking and roller wheel pressures before returning elevator to service.

MODEL D ROLLER GUIDE SERVICE PARTS LIST



KEY	QTY	PART #	DESCRIPTION
1	6	ED02024	Set Screw
2	3	ED02006	Pivot Pin
3	3	EC18440	Wheel Stud Lock Washer
4	3	EC18417	Wheel Stud
5	3	EC18424	Side/Face Arm Spring
6	3	EC18422	Locknut
7	3	See Roller Wheel Configuration Options	

ROLLER WHEEL CONFIGURATIONS

Typical Installations

ASSEMBLY	QTY	PART #	DESCRIPTION
ED02000	3	EC18405	3-1/4" Black Neoprene Roller Wheel

Heavy-Duty Installations

ASSEMBLY	QTY	PART #	DESCRIPTION
ED02020	3	EC18446	3-1/4" Green Polyurethane Roller Wheel
ED02022	3	EC18441	3-1/4" Red Polyurethane Roller Wheel