



Scan here to learn more about Flex-Mount™ Adjustable Adapter Plates and other ELSCO products.

FLEX-MOUNT™ ADJUSTABLE ADAPTER PLATES

Make the install as smooth as the ride...

Flex-Mount™ Adjustable Adapter Plates make it quicker, easier and cheaper to install roller guides when the existing bolt pattern and mounting pattern do not line up.

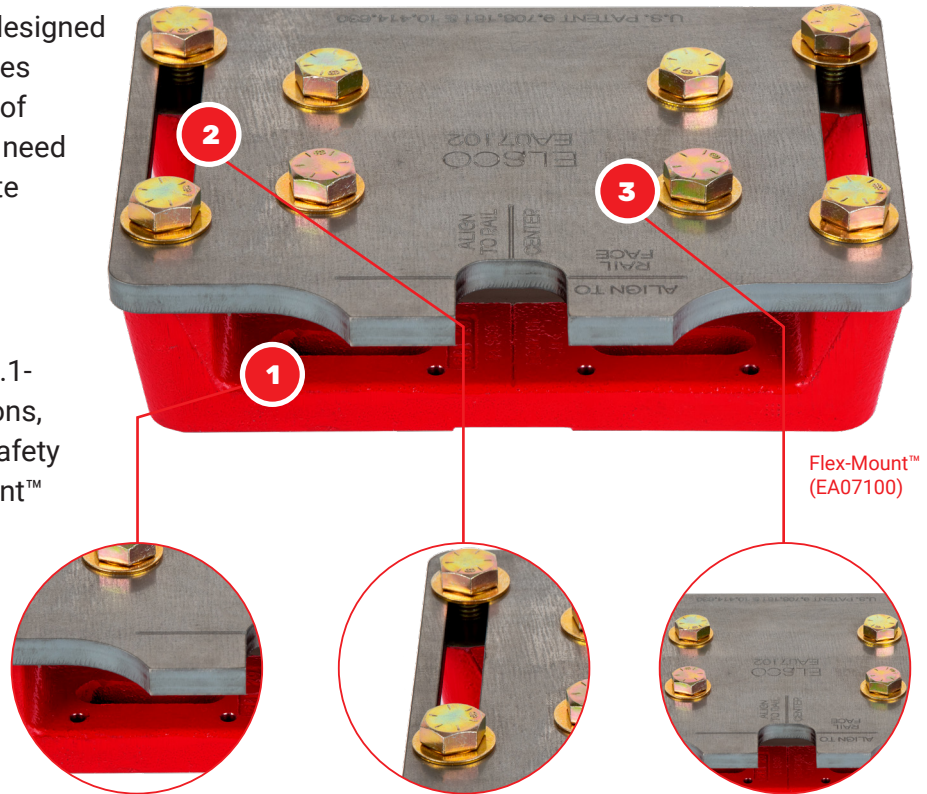
Designed for use on elevator cars and counterweights up to 10,000 lbs capacity in standard applications or up to 5,000 lbs capacity in seismic applications.

U.S. Patent No - Standard Flex-Mount™ - 9,708,161 & 10,414,630
Seismic Flex-Mount™ - 9,708,161 & 10,414,630 & 10,662,030

Flex-Mount™ Adjustable Adapter Plates are an innovative, patented hardware kit designed specifically to allow ELSCO roller guides and slide guides to mount on a range of pre-existing bolt patterns, without the need to take accurate measurements, create drawings, and fabricate custom adapter plates.

Flex-Mount™ has been designed and engineered to comply with ASME A17.1-2013, CSA B44/19 and EN81 regulations, and when installed correctly, deliver safety and peace of mind. Seismic Flex-Mount™ Adjustable Adapter Plates meet application requirements in seismic zones 2, 3, or greater.

During elevator modernization projects, unexpected labor requirements often drive up costs and can delay the completion of the project. This can occur when mounting roller guides to pre-existing mounting bolt patterns that do not match. Using Flex-Mount™ adapter plates solves this common problem.



Flex-Mount™ (EA07100)

SAVE TIME

- › Eliminate time wasted measuring-up for custom adapter plates
- › Eliminate measuring or adapter plate fabrication errors as the Flex-Mount™ adjusts to the existing bolt pattern
- › Eliminate downtime waiting for custom plates to be fabricated and delivered
- › Reduce overall elevator down time by avoiding all these time wasting problems

SAVE MONEY

- › Reduce labor costs through quicker roller guide installation
- › Reduce service costs by easily adjusting the Flex-Mount™ during call-outs
- › Reduce unplanned costs by adjusting the Flex-Mount™ as the hoistway, car or counterweight conditions change over time

COMPLY WITH REGULATIONS

- › Flex-Mount™ is an engineered adapter plate solution that has been designed and tested to comply with ASME, CSA and EN81 regulations when installed correctly
- › Seismic Flex-Mount™ Adapter Plates meet application requirements in seismic zones 2, 3, or greater

QUICK AND EASY INSTALLATION

- › Align and bolt the two bracket bars into the existing mounting holes (for elevators with capacities greater than 3,000 lbs pin the bracket in place as well)
- › Align and bolt the plate on top of the bracket bars
- › Align and bolt the roller guide to the plate
Note: In certain seismic applications pinning is required

EXCEPTIONAL ADJUSTABILITY

1 Adjustable Brackets

- › With long slots for mounting-hardware easily adjust to the existing bolt pattern
- › Adapt to crooked or non-square bolt patterns
- › Bolt pattern width can be adjusted from 3" - 6-1/2" (76 - 165 mm) for car Flex-Mount™ and from 1-1/4" - 4" (32 - 102 mm) for counterweight Flex-Mount™

2 Adjustable Flex-Mount™ Plate

- › With long slots allows the distance between the plate and the face of the rail to be adjusted
- › Distance to face of rail can be adjusted up to 2-3/4" (70 mm) on car Flex-Mount™ and up to 2" (51 mm) on counterweight Flex-Mount™

3 Industry Standard Bolt Pattern

- › EA07100 bolt pattern fits Model A, B, Express-3, SA-8 and SA-15 guides
- › EC07100 bolt pattern fits Model C, D, SC-8 and SD-8 guides

APPLICATIONS TABLE

Flex-Mount™

GUIDE COMPATIBILITY											
PART #	APPLICATION	MAX CAPACITY	EXPRESS-3	MODEL A	MODEL B	MODEL C	MODEL D	SA-8	SA-15	SC-8	SD-8
EA07100	Car	10,000 lbs 4,500 kg									
EA07100	Counterweight	10,000 lbs 4,500 kg									
EC07100	Counterweight	10,000 lbs 4,500 kg									
EC07100	Counterweight w/ instantaneous safeties in EN zone	3,500 lbs 1,500 kg									
EC07100	Car Class A loading	3,500 lbs 1,500 kg									
EC07100	Car Class C1 loading	2,000 lbs 900 kg									

Suitable for use in seismic zones where the retention hardware is integrated into car or counterweight frame/safety gear.

Note: For Class B/C/C1/C2/C3 or significantly imbalanced elevators contact ELSCO Customer Service to verify that Flex-Mount™ will withstand maximum loading of the application. Not for use with Express-6 or Model E roller guides

Seismic Flex-Mount™

GUIDE COMPATIBILITY											
PART #	MAX CAPACITY	EXPRESS-3	MODEL A	MODEL B	MODEL C	MODEL D	SA-8	SA-15	SC-8	SD-8	
EA07100-S-15 / S-18/S-22/S-30	5,000 lbs 2,270 kg										
EC07100-S-08 / S-15/ S-18	5,000 lbs 2,270 kg										

FLEX-MOUNT™ RAIL COMPATIBILITY

● Compatible ◐ Check Clearance

		RAIL SIZES									
		ISO ASME	T89	T90	T114	T125	T127-1	T127-2	T140-1	T140-2	T140-3
		8#	8#	11#	12#	12#	15#	18#	22#	30#	
PART #	WIDTH in (mm)	5/8" (16 mm)	5/8" (16 mm)	5/8" (16 mm)	5/8" (16 mm)	5/8" (16 mm)	5/8" (16 mm)	3/4" (19 mm)	1-1/8" (28.6 mm)	1-1/4" (31.75 mm)	
Standard	EA07100	●	●	●	●	●	●	●	●	●	
	EC07100	●	●	●	●	●	●	●			
Seismic	EA07100-S-15			◐	◐	◐	●				
	EA07100-S-18							●			
	EA07100-S-22								●		
	EA07100-S-30									●	
	EC07100-S-08	●									
	EC07100-S-15			◐	◐	◐	●				
	EC07100-S-18							●			

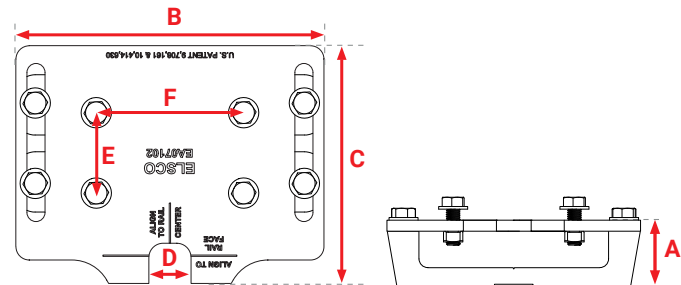
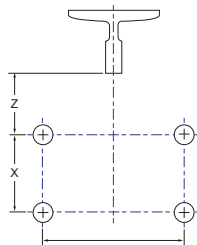
Included with each Flex-Mount™: (1) Flex-Mount™ plate, (2) brackets, (8) Grade 8 mounting bolts and (8) washers. Seismic Flex-Mount™ adapters also include (2) seismic washers and (2) grooved dowel pins. Flex-Mount™ comes in boxes of 2 complete units. Customer must supply ASME-compliant mounting hardware.

CRITICAL DIMENSIONS

FLEX-MOUNT™ MEASUREMENTS	STANDARD FLEX-MOUNT™		SEISMIC FLEX-MOUNT™	
	EA07100	EC07100	EA07100-S	EC07100-S
A - Height, overall bracket and plate	3" (75 mm)	2-7/16" (62 mm)	3" (75 mm)	2-7/16" (62 mm)
B - Width, maximum overall (including hardware)	11-1/2" (292 mm)	7-13/16" (197 mm)	11-1/2" (292 mm)	7-15/16" (201 mm)
Width, overall plate only	11-1/2" (292 mm)	7-1/2" (191 mm)	11-1/2" (292 mm)	7-1/2" (191 mm)
C - Depth, overall (see Installation & Parts Guide for Details)	8-7/8" (225 mm)	7-1/2" (191 mm)	9.9" - 10.2" (251 mm - 259 mm)	7.75" - 8.47" (197 mm - 215 mm)
D - Throat width (see Installation & Parts Guide for Details)	1.576" (40 mm)	1.330" (34 mm)	1.0" - 1.63" (25 mm - 41 mm)	1.0" - 1.13" (25 mm - 29 mm)
BOLT HOLE LOCATIONS				
E - Distance between bolts on center, y-axis (post-to-post)	3" (76 mm)	2-3/8" (60 mm)	3" (76 mm)	2-3/8" (60 mm)
F - Distance between bolts on center, x-axis	5-1/2" (140 mm)	2-3/8" (60 mm)	5-1/2" (140 mm)	2-3/8" (60 mm)
WEIGHT				
Each	27.5 lb (12.5 kg)	14.5 lb (6.6 kg)	27.5 lb (12.5 kg)	14.5 lb (6.6 kg)

COMPATIBILITY WITH EXISTING MOUNTING PATTERNS

Bolt Patterns for Guides



Car Guides

Z, FRONT BOLT-TO-RAIL FACE	X, FRONT-TO-REAR BOLT	
INCREMENTS OF 1/4"	MIN	MAX
1-5/8" (41.3 mm)	2-1/2" (63.5 mm)	5-1/4" (133.4 mm)
1-7/8" (47.6 mm)		5" (127.0 mm)
2-1/8" (54.0 mm)		4-3/4" (120.7 mm)
2-3/8" (60.3 mm)		4-1/2" (114.3 mm)
2-5/8" (66.7 mm)		4-1/4" (108.0 mm)
2-7/8" (73.0 mm)		4" (101.6 mm)
3-1/8" (79.4 mm)		3-3/4" (95.3 mm)
3-3/8" (85.7 mm)		3-1/2" (88.9 mm)
3-5/8" (92.1 mm)		3-1/4" (82.6 mm)
3-7/8" (98.4 mm)		3" (76.2 mm)
4-1/8" (104.8 mm)		2-3/4" (69.9 mm)
4-3/8" (111.1 mm)		2-1/2" (63.5 mm)

DISTANCE BETWEEN BOLTS ON CENTER, X-AXIS		
	3" (76 mm)	6-1/2" (165 mm)

Counterweight Guides

Z, FRONT BOLT-TO-RAIL FACE	X, FRONT-TO-REAR BOLT	
INCREMENTS OF 1/4"	MIN	MAX
1-1/2" (38.1 mm)	2-1/8" (54.0 mm)	4-1/8" (104.8 mm)
1-3/4" (44.5 mm)		3-7/8" (98.4 mm)
2" (50.8 mm)		3-5/8" (92.1 mm)
2-1/4" (57.2 mm)		3-3/8" (85.7 mm)
2-1/2" (63.5 mm)		3-1/8" (79.4 mm)
2-3/4" (69.9 mm)		2-7/8" (73.0 mm)
3" (76.2 mm)		2-5/8" (66.7 mm)
3-1/4" (82.6 mm)		2-3/8" (60.3 mm)
3-1/2" (88.9 mm)		2-1/8" (54.0 mm)

DISTANCE BETWEEN BOLTS ON CENTER, X-AXIS		
	1-1/4" (32 mm)	4" (102 mm)

Flex-Mount™ Adjustable Adapters can dramatically reduce installation time in many situations, but not all elevators are suitable. Contact ELSCO Customer Service for recommended applications.