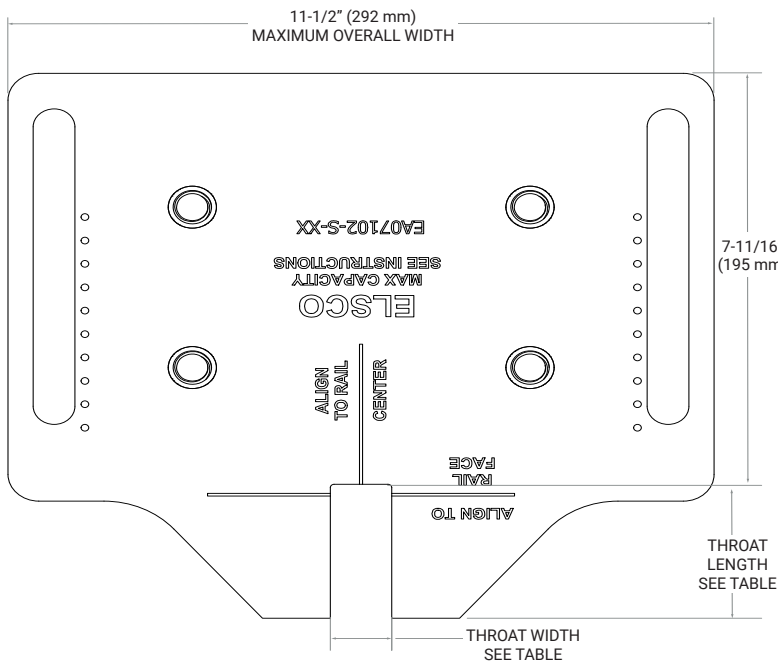




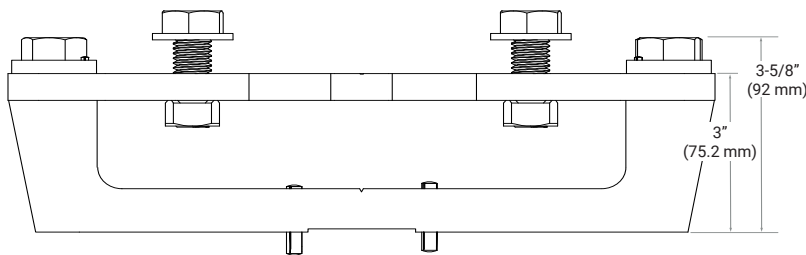
SEISMIC FLEX-MOUNT™

MOUNTING SPECIFICATIONS

Part Number EA07100-S-XX

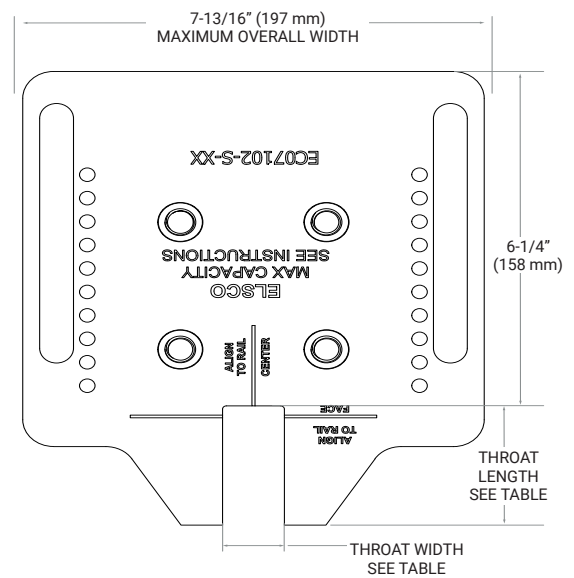


PART NUMBER	THROAT LENGTH	THROAT WIDTH
EA07102-S-15	2.226"	1.004"
EA07102-S-18	2.226"	1.129"
EA07102-S-22	2.257"	1.504"
EA07102-S-30	2.507"	1.629"

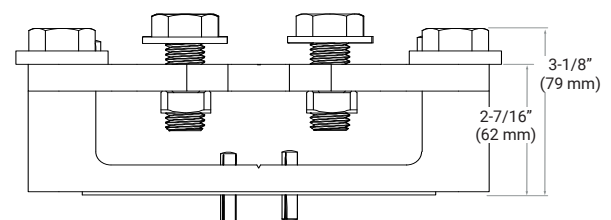


For use with Model A, Model B, Express-3, SA-15, SA-8
 On balanced elevators with load capacity up to 5,000 lbs (2,268 kg)
 On balanced counterweights with elevator load capacity up to 5,000 lbs (2,268 kg)

Part Number EC07100-S-XX



PART NUMBER	THROAT LENGTH	THROAT WIDTH
EC07102-S-08	1.507"	1.004"
EC07102-S-15	2.226"	1.004"
EC07102-S-18	2.226"	1.129"



For use with Model C, Model D, SC-8, SD-8
 On balanced counterweights with elevator capacity up to 5,000 lbs (2,268 kg)

Make the install as smooth as the ride...

Flex-Mount™ is an innovative, patented hardware kit designed specifically to allow ELSCO roller guides to mount on a range of pre-existing bolt patterns, without the need to take accurate measurements, create drawings, and fabricate custom adapter plates.

Suitable for use in seismic zones where the retention hardware is integrated into car or counterweight frame/safety gear.

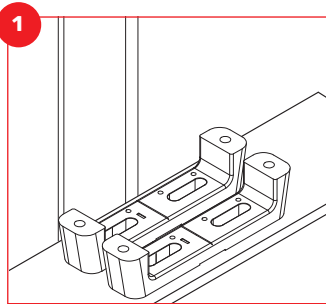
CAR SEISMIC FLEX-MOUNT™ INSTALLATION INSTRUCTIONS

Car Seismic Flex-Mount™ Adjustable Adapter Plates include:

- › 2 brackets
- › 1 seismic plate
- › 8 bolts
- › 8 washers
- › 4 grooved dowel pins 3/4"
- › 4 grooved dowel pins 1-1/4"
- › 1 drill bit
- › 2 seismic washers

Customer-supplied – required mounting hardware:

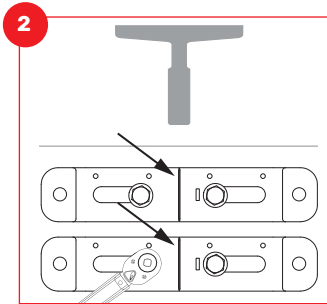
- › 4 x 5/8"-11 bolts, grade 8, zinc plated
- › 4 x 5/8" washers, grade 8, zinc plated
- › 4 x 5/8"-11 nuts, grade 8, zinc plated



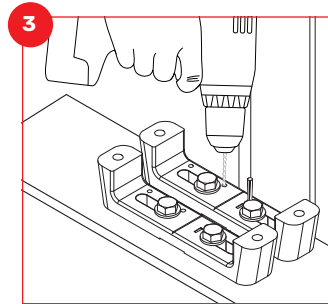
Clean mounting surface to remove any grease, debris, etc. Center elevator car.

Position brackets onto mounting surface to confirm slots and mounting holes match.

If holes don't match, drill new 5/8" holes into mounting surface to line up with slots.

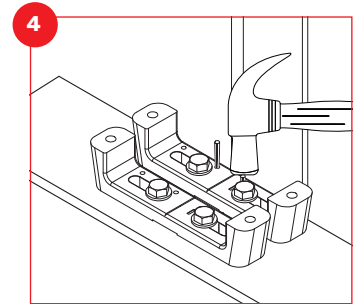


Place ASME-compliant mounting hardware (customer supplied) through slots and mounting surface. Align notches on brackets with center of face rail. Use torque wrench to tighten bolts to 160 ft-lbs to prevent slippage and hardware damage.



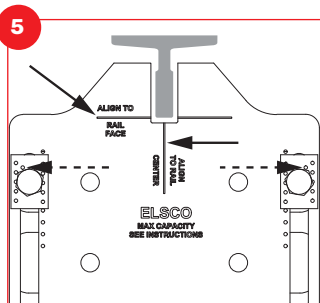
Use 1/4" drill bit to drill through two of provided holes in bracket closest to rail.

Drill through bracket and at least 1/2" into mounting surface.



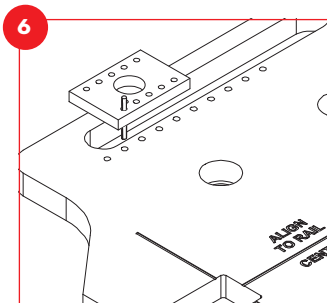
Using hammer, install narrow end of 1-1/4" tapered pins in newly-drilled holes (outer or inner holes only).

Top of pins should be close to flush with bracket after installation.

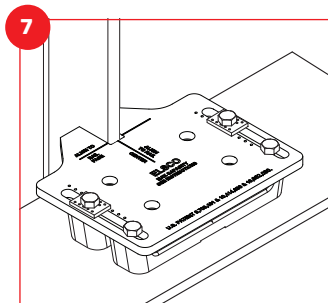


Position plate onto brackets and align notches on plate throat to rail. Rotate or flip seismic washers to determine closest match with pre-drilled pin holes on plate. Loosely install bolts with seismic washers to confirm best seismic washer position.

The orientation of seismic washers is mirrored from side-to-side (indicated by dashed arrows). Proper alignment allows for maximum ASME-compliant displacement of 0.197" (5 mm) in all directions.



Consider removing washer from plate and inserting 3/4" pin into correct pin hole. This allows pin head to easily fill desired plate hole when hammering. Using hammer, install 3/4" long pins fully into seismic washers and plate until flush.



Use torque wrench to tighten provided bolts to 160 ft-lbs.

Continue with ELSCO guide installation using the provided bolts and washers.

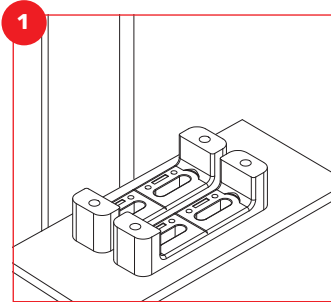
COUNTERWEIGHT SEISMIC FLEX-MOUNT™ INSTALLATION INSTRUCTIONS

Counterweight Seismic Flex-Mount™ Adjustable Adapter Plates include:

- › 2 brackets
- › 1 seismic plate
- › 8 bolts
- › 8 washers
- › 4 grooved dowel pins 3/4"
- › 4 grooved dowl pins 1-1/4"
- › 1 drill bit
- › 2 seismic washers

Customer-supplied – required mounting hardware:

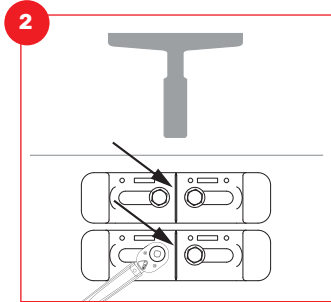
- › 4 x 1/2"-13 bolts, grade 8, zinc plated
- › 4 x 1/2" washers, grade 8, zinc plated
- › 4 x 1/2"-13 nuts, grade 8, zinc plated



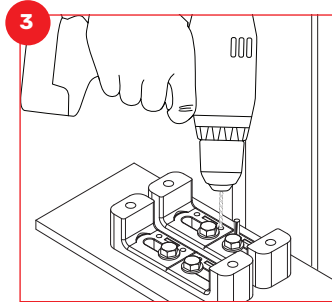
Clean mounting surface to remove any grease, debris, etc. Center counterweight.

Position brackets onto mounting surface to confirm slots and mounting holes match.

If holes don't match, drill new 5/8" holes into mounting surface to line up with slots.

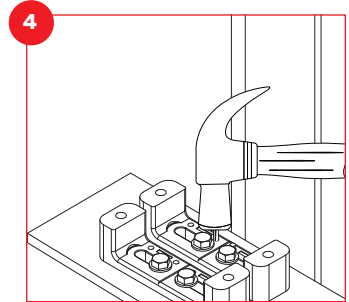


Place ASME-compliant mounting hardware (customer supplied) through slots and mounting surface. Align notches on brackets with center of face rail. Use torque wrench to tighten bolts to 80 ft-lbs to prevent slippage and hardware damage.



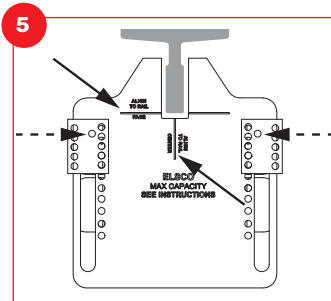
Use 1/4" drill bit to drill through two of provided holes in bracket closest to rail.

Drill through bracket and at least 1/2" into mounting surface.



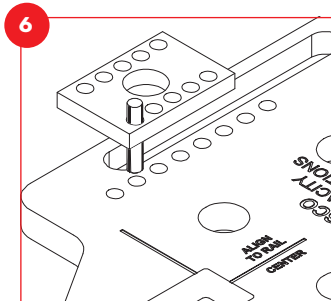
Using hammer, install narrow end of 1-1/4" tapered pins in newly-drilled holes (outer or inner holes only).

Top of pins should be close to flush with bracket after installation.

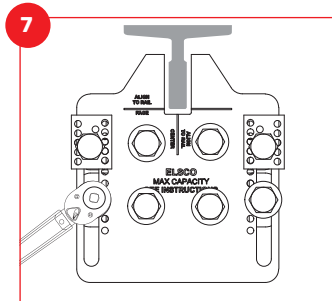


Position plate onto brackets and align notches on plate throat to rail. Loosely install bolts with seismic washers to confirm best seismic washer position.

The orientation of seismic washers is mirrored from side-to-side (indicated by dashed arrows). Proper alignment allows for maximum ASME-compliant displacement of 0.197" (5 mm) in all directions.



Consider removing washer from plate and inserting 3/4" pin into correct pin hole. This allows pin head to easily fill desired plate hole when hammering. Using hammer, install 3/4" long pins into seismic washers and plate until flush.



Use torque wrench to tighten provided bolts to 80 ft. lbs.

Continue with ELSCO guide installation using the provided bolts and washers.

RECOMMENDATIONS & SPECIAL CONDITIONS

Car Flex-Mount™ Specifications

- For Class B/C/C1/C2/C3, or significantly imbalanced elevators, contact ELSCO Customer Service to verify that Flex-Mount™ will withstand maximum loading of application

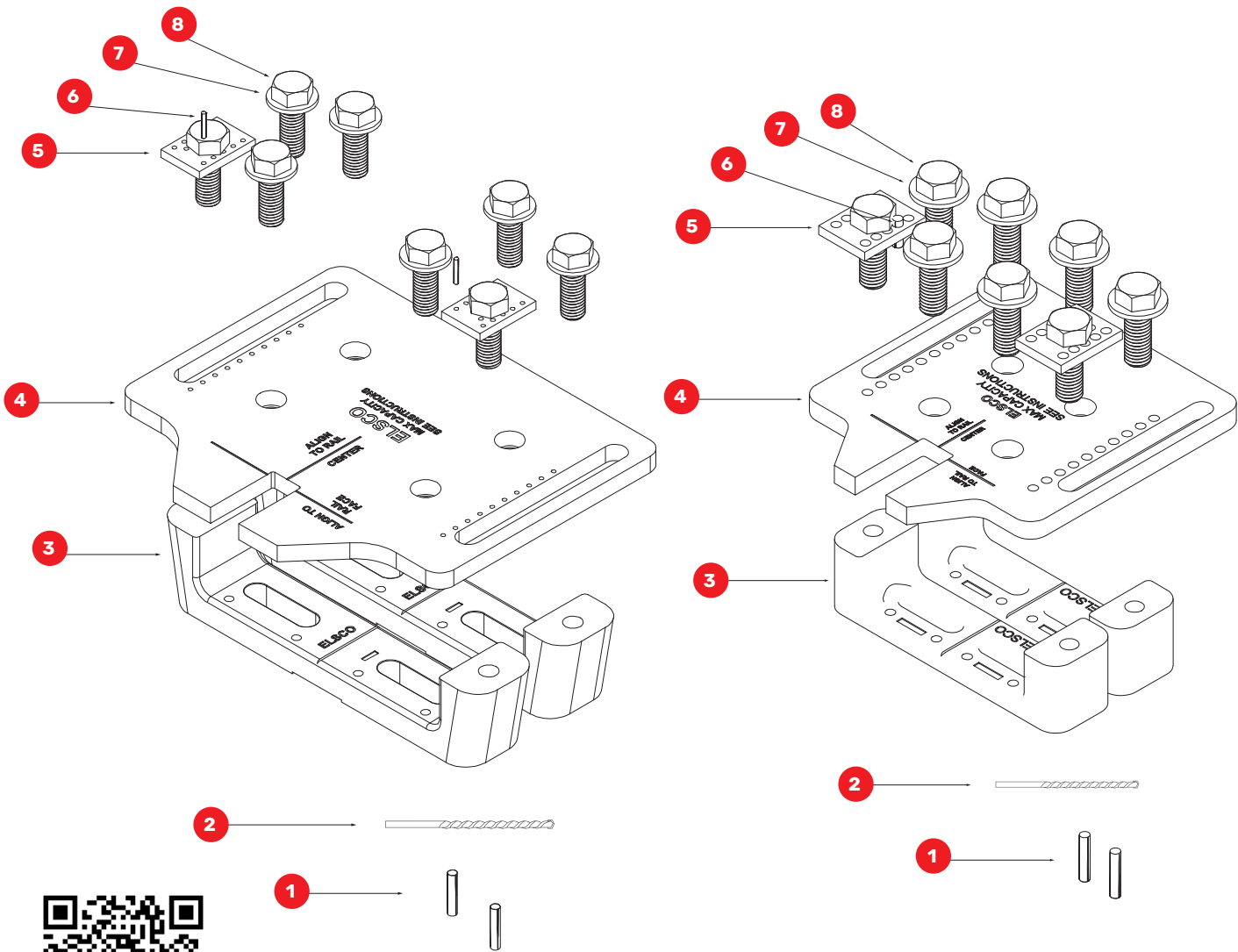
Counterweight Flex-Mount™ Specifications

- Contact ELSCO if counterweight is significantly imbalanced or if rails are not aligned to center of frame

Car & Counterweight Specifications

- Suitable for use in seismic zones 2, 3, or greater
- Elevator Safety Code Compliance:
 - › ASME A17.1-2013 (Compliant only for rails 5/8" and larger), EN 81-20, -50
- ASME-compliant when installed under these conditions:
 - › Existing mounting plate has no obstructions (i.e. bolt heads)
 - › Mounting hardware is ASME-compliant per specifications
 - › All hardware is properly torqued according to instructions

SEISMIC FLEX-MOUNT™ SERVICE PARTS LIST



Seismic Flex-Mount™ Elevator Car Assembly

KEY	QTY	PART #	DESCRIPTION
1	2	EA07110	1/4" Grooved Dowel Pin, 1-1/4" long
2	1	EA07113	1/4" Drill Bit
3	2	EA07101	Bracket, Car Flex-Mount
4	1	EA07102-S-XX*	Seismic Plate, Car Flex-Mount
5	2	EA07115	Seismic Washer, Car Flex-Mount
6	2	EA07112	1/8" Grooved Dowel Pin, 3/4" long
7	8	EA07104	5/8" Washer, Grade 8
8	8	EA07103	5/8"-11 x 1-3/4" Bolt, Grade 8

Seismic Flex-Mount™ Elevator Counterweight Assembly

KEY	QTY	PART #	DESCRIPTION
1	2	EA07110	1/4" Grooved Dowel Pin, 1-1/4" long
2	1	EA07113	1/4" Drill Bit
3	2	EC07101	Bracket, CWT Flex-Mount
4	1	EC07102-S-XX*	Seismic Plate, CWT Flex-Mount
5	2	EC07115	Seismic Washer, CWT Flex-Mount
6	2	EC07112	1/4" Grooved Dowel Pin, 3/4" long
7	8	EC07104	1/2" Washer, Grade 8
8	8	EC07103	1/2"-13 Bolt x 1-1/2", Grade 8

*Refer to rail size. Example: 15 lb rail = EA07102-S-15

© ELSCO 2022 | Seismic Flex-Mount™ Installation and Parts Guide | 0001 | U.S. Patent No 9,708,161 & 10,414,630 & 10,662,030