



CALIBRE



C-150

Designed using quality components to deliver performance, ride quality and exceptional value

Combining ease of installation and hoistway adjustability, the C-150 roller guide provides a smooth ride on a wide range of elevator cars and guide rail sizes.

Designed for elevator cars up to 3.0 m/s (600 fpm) and 1,800 kg (4,000 lbs) capacity in low- to mid-rise buildings.

The Calibre C-150 is a three-wheel roller guide with spring suspension, adjustable stops in all directions, and three 150 mm diameter polyurethane rollers.

Engineered and tested to meet EN81 and ASME A17.1/CSA B44 standards, the Calibre C-150 is constructed from durable, precision machined, ductile iron castings and is assembled using quality parts to ensure the installed roller guide delivers a lifetime of reliable performance.

QUICK & EASY INSTALLATION

1 Face Arm Retention Bolt

- › After the guide is accurately positioned and secured, remove the face arm retaining bolt and the correct roller wheel pre-load force will be applied
- › Precise factory setup for specific rail sizes reduces installation steps, which means there is no need for adjustment in the field
- › This innovative feature simplifies the accurate installation of the guides saving time and money

LOW NOISE AND VIBRATION

2 Polyurethane Rollers

- › Precisely molded and finished tread profile provides a balanced and concentric roller
- › 85A durometer tread dampens vibration and reduces noise

3 Precision Ball Bearings

- › Dual bearing design provides the roller extra stability to ensure a true ride, with minimal noise and vibration
- › Industrial grade, high quality ball bearings will last for millions of cycles

DURABLE, ENGINEERED DESIGN

4 Robust Casting and Design Features

- › Precisely machined castings ensure the final assembly is of the highest quality
- › Tested to meet applicable codes and standards ensuring the guides provide a lifetime of reliable performance



C-150
(EG21016)

CONTROL OF CAR FLOAT

- › The C-150 is capable of being adjusted to allow a wide range of elevator car float which is excellent for troubleshooting stubborn hoistway issues

5 Fully Adjustable Stabilizing Springs

- › Stabilizing springs are factory-set, but can be adjusted in the field, to minimize bumps and vibration
- › Spring adjustments can be used to further reduce peak-to-peak horizontal forces to measurably improve ride quality

6 Adjustable Stops

- › Allow independent control of the overall float of the elevator car between the rails in post-to-post and front-to-back directions
- › Adjustable stops are factory-set, but can be adjusted in the field to deal with troublesome hoistway issues

APPLICATIONS TABLE

Find the elevator type and verify the platform falls within the platform dimensions for that elevator. Next, find the intersection of the elevator’s speed and capacity to confirm the roller guide is recommended for the application.

CAPACITY kg/lbs	PASSENGER CAR PLATFORM UP TO 10' WIDE X 8' DEEP/ (3050 mm X 2440 mm)						HOSPITAL CAR PLATFORM UP TO 6' WIDE X 10' DEEP/ (1830 mm X 3050 mm)						FREIGHT/SERVICE CAR PLATFORM UP TO 10' WIDE X 8' DEEP/ (3050 mm X 2440 mm)											
	m/s		1		1.5		2.0		2.5		3.0		0.5		1		1.5		2.0		2.5		3.0	
	SPEED																							
fpm	100	200	300	400	500	600	100	200	300	400	500	600	100	200	300	400	500	600	100	200	300	400	500	600
≤ 900 kg 2,000 lbs																								
1,100 kg 2,500 lbs																								
1,400 kg 3,000 lbs																								
1,600 kg 3,500 lbs																								
1,800 kg 4,000 lbs																								
2,000 kg 4,500 lbs																								

Not every elevator is the same. If your application is not indicated in the red shaded area, please contact ELSCO Customer Service for guide selection recommendations.

ROLLER GUIDE RAIL COMPATIBILITY

The C-150 is available in four versions, each pre-set to a specific rail size.

● Compatible ◐ Check Clearance

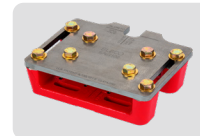
		RAIL SIZES													
ISO ASME		T65	T70	T75	T78	T82	T89	T90	T114	T125	T127-1	T127-2	T140-1	T140-2	T140-3
WIDTH (mm)		7.9	9.0	10	10	9.0	16	16	16	16	16	16	19	28.6	31.75
WIDTH (in)		0.311	0.354	0.394	0.394	0.354	5/8	5/8	5/8	5/8	5/8	5/8	3/4	1-1/8	1-1/4
PART #	EG21009					●									
	EG21010			●	●										
	EG21016						●	●	●	●	●	●			
	EG21019												●		

RECOMMENDATIONS & SPECIAL CONDITIONS

→ For elevators with higher capacity and speed applications, or if the car is heavily leaning or imbalanced, contact ELSCO Customer Service for guide selection recommendations

OPTIONAL ACCESSORIES

**Flex-Mount™
Adjustable Adaptor Plate**



(EA07100)

Cover Plate Kit



(EG25001)

SEISMIC ACCESSORIES

Seismic plates must be installed if the guide is used to meet the elevator seismic requirements per ASME A17.1/CSA B44.19, section 8.4 in seismic risk zones 2 or greater. Seismic Flex-Mount™ Adjustable Adapter Plates can be used when mounting to pre-existing bolt patterns.

		RAIL SIZES					
ISO ASME		T89 8#	T114 11#	T125 12#	T127-1 12#	T127-2 15#	T140-1 18#
Seismic Plate	EB06008	EB06015				EB06018	
Seismic Flex-Mount™ Adjustable Adapter Plate		EA07100-S-15				EA07100-S-18	

CRITICAL DIMENSIONS

GUIDE MEASUREMENTS

A - Height, overall	207 mm (8-3/16")
Height, overall with optional Flex-Mount™	282 mm (11-1/8")
Height, overall with optional Seismic Plate	220 mm (8-11/16")
Height, minimum clearance with optional Cover Plate	207 mm (9-3/16")
B - Width, overall	322 mm (12-11/16")
C - Depth, overall	199 mm (7-7/8")
D - Distance from front to face of rail	38 mm (1-1/2")
E - Depth, from face of rail	161 mm (6-5/16")

BOLT HOLE LOCATIONS

F - Depth, from face of rail to center of bolt hole	61 mm (2-3/8")
G - Distance between bolts on center, y-axis (post-to-post)	76 mm (3")
H - Distance from center of face wheel to center of bolt	70 mm (2-3/4")
I - Distance between bolts on center, x-axis	140 mm (5-1/2")

MOUNTING BOLT HOLES

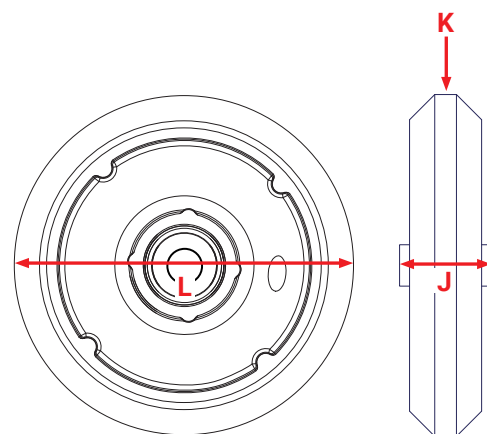
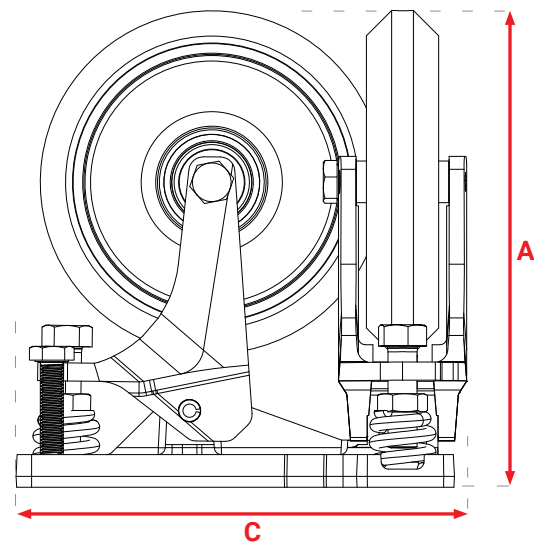
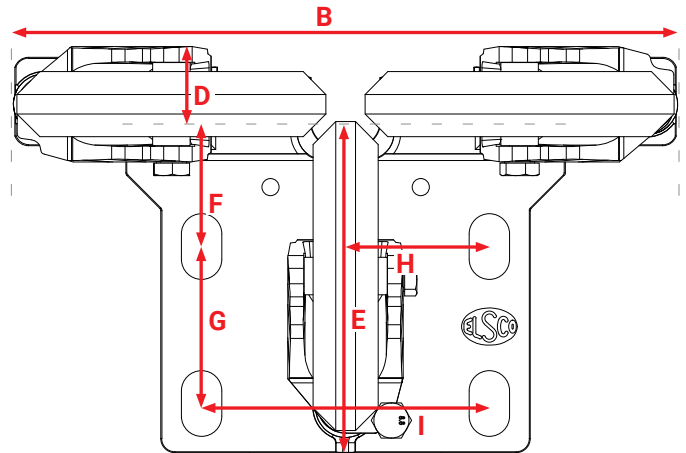
Number of bolt holes	4
Bolt hole dimensions	32 mm x 20 mm (1-1/4" x 13/16")

WEIGHT

Each guide	8 kg (17.5 lbs)
-------------------	--------------------

ROLLERS

J - Width at hub	40 mm (1-5/8")
K - Polyurethane tread width	12.7 mm (1/2")
L - Diameter	150 mm (5-15/16")
Bearing I.D.	10 mm (0.394")
Runout (total indicator reading)	0.1 mm (0.004")



Scan here to learn more about the C-150 Roller Guide and other ELSCO products.